

Mini Clay

Geometric shapes and a perfect balance in multiple material and colour variations. Also in a low-table version, always a classic of international contemporary design.



Mini Clay

Disassembling small table with rigid polyurethane base available in lacquered finishing or covered with hand-spread pastes finishes, as per price-list. Tops available in ceramic, lacquered MDF or covered with hand-spread finishes. Available in indoor and outdoor versions.



Mini Clay

height
45 cm

measures
Ø 50 cm
Ø 60 cm
Ø 75 cm

Mini Clay

height
55 cm

measures
Ø 50 cm
Ø 60 cm
Ø 75 cm

Mini Clay

height
65 cm

measures
Ø 50 cm
Ø 60 cm
Ø 75 cm

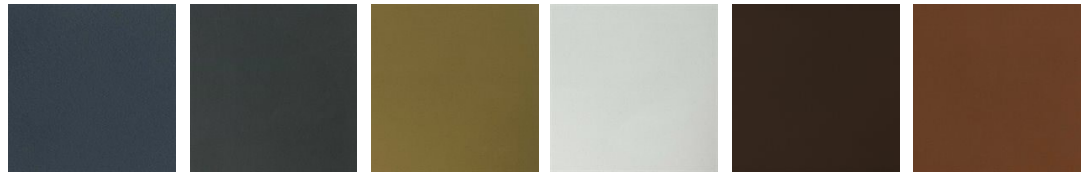
Mini Clay

height
35 cm

measures
Ø 90 cm
Ø 110 cm

Base

Handcraft finishes



D55 REALE BLUE
CONCRETE

D56 ARDESIA
CONCRETE

D57 OCRA CONCRETE

D58 GHIACCIO
CONCRETE

D59 CACAO CONCRETE

D60 MATTONE RED
CONCRETE



D61 WHITE CONCRETE

D65 LUNA GREY
CONCRETE

D66 BLACK CONCRETE

D62 COURT GREY

D64 TUFO STONE

D67 LAVA STONE

Lacquers



B13 MATT SABBIA

B22 BUNGEE BUNGEE
BROWN

B34 LIGHT GREY

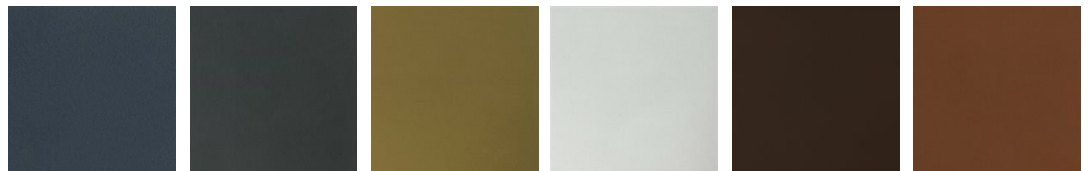
B42 GRAFITE

B62 MATT WHITE

B82 GREY

Top

Handcraft finishes



D55 REALE BLUE
CONCRETE

D56 ARDESIA
CONCRETE

D57 OCRA CONCRETE

D58 GHIACCIO
CONCRETE

D59 CACAO CONCRETE

D60 MATTONE RED
CONCRETE



D61 WHITE CONCRETE

D65 LUNA GREY
CONCRETE

D66 BLACK CONCRETE

D62 COURT GREY

D64 TUFO STONE

D67 LAVA STONE

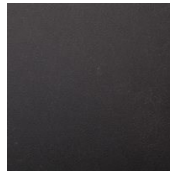
Ceramics



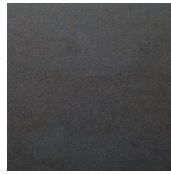
D84 BIANCO CALCE



D85 CEMENTO



D86 ASFALTO



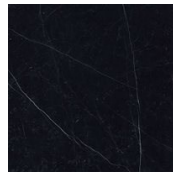
D87 LAVA



D89 GRIGIO AMBER



D90 BIANCO STATUARIO



D92 GLOSSY
MARQUINA BLACK



D93 SAHARA

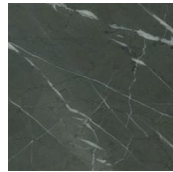


D94 INDUSTRIAL
WHITE

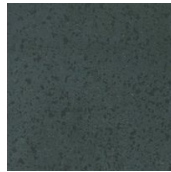


D95 INDUSTRIAL GREY

Marble



N05 GRAFITE GREY



N04 ETNA NATURAL
ROCK



N03 CALACATTA ORO



N02 CARRARA

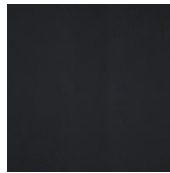
Lacquers



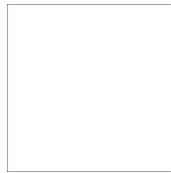
B13 MATT SABBIA



B22 BUNGEE BUNGEE
BROWN



B42 GRAFITE



B62 MATT WHITE