

LE KLINT

THE COLLECTION



Made in **Odense**, Denmark

You all, expect a LE KLINT lamp to last for many years, and it surely can... if you look after it. Our lamps can also be repaired and are often inherited by the next generation, and we are very proud of that.

Customers today, tend to focus on where products originates, how they are produced and under what conditions, ie sustainability, environmentally friendly facilities etc. etc.

Our focus has increased in these modern times. However... For LE KLINT this has been and continues to be a natural part of our choice of suppliers, materials and production process.

We guarantee you good quality, workmanship – honest documentation and reassurance so that you are secure in what you are getting, when purchasing a LE KLINT.

Take good care of your lamp, it can last you a lifetime.

Best regards

Kim Weckstrøm Jensen
CEO



LE KLINT HISTORY

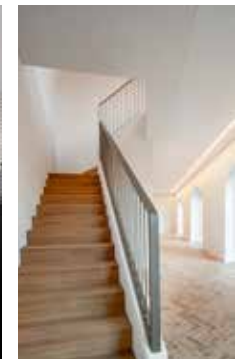


The story of LE KLINT dates back to the beginning of the 20th Century when a hand pleated lampshade was folded to fit a paraffin lamp both designed by architect and master of engineering, P.V. Jensen Klint.

Today, we embrace the ingenuity of talented young designers who make a design statement that is cohesive with our DNA. This is why the history of LE KLINT is not just another story of a business but a story of drive and determination that keeps LE KLINT current and even ahead of the constant changes in trends.



Made in Odense since 1943





PLIVELLO
Design: Christian Troels

PLIVELLO

Design: Christian Troels



BEE HIVE

Design: Harrit-Sørensen





GALAXY

Design: Poul Christiansen



SHIBUI Design: Søren Refsgaard





MODEL 375

Design: Shade by Esben Klint
Base by KLINT Design Team



CANDLELIGHT

Design: Philip Bro Ludvigsen



MUTATIO

Design: Christian Troels



CACHÉ

Design: Aurélien Barbry



SOLEIL

Design: Philip Bro Ludvigsen



LAMELLA

Design: Takagi & Homstvedt





LAMELLA SERIES

Design: Takagi & Homstvedt



A series that started out as just pendants then evolved to include floor and table lamps

CRAFTSMANSHIP



Our team of highly skilled technicians, collaborates diligently alongside innovative designers and architects to guarantee that your choice of lighting, regardless of the simplicities or intricacies of the materials used, for pendant, table or floor lamps are all perfected to the highest of standard.



This work ethic has gained us longevity and recognition as masters of our craft which has helped to accredit LE KLINT, Purveyors of the Royal Danish Court.



SAX LAMPS

Design: Erik Hansen



CARRONADE
NORDIC & BLACK SERIES

Design: Markus Johansson



CALEO

Design: Rikke Frost

SNOWDROP

Design: Harrit-Sørensen+Samson





SWIRL

Design: Øivind Slaatto

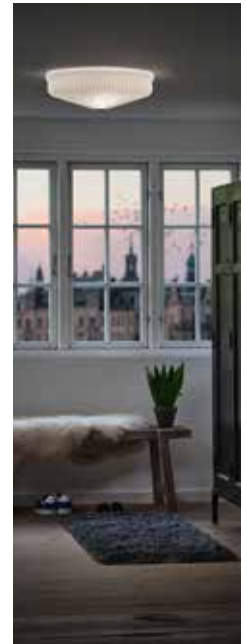


This unusual design allows transparency in between the panels, dispersing perfect light suitable for all interiors.



SHADES

Our classic hand-folded lampshades are an important part of our DNA. Each lampshade is a piece of Danish Craftsmanship, which has been manufactured in Odense since 1943. The lampshades are part of the collection of pendants, table, floor and wall lamps. They can be replaced if necessary and used together with your old retro or vintage lamp. Treat it with a gentle hand and it will last for generations.



På det danske marked er shades kollektionen kun tilgængelig hos

udvalgte partnere og LE KLINT Brand Stores / leklint.com



THE BOUQUET

Design: Sinja Svarrer Damkjær

THE BOUQUET SERIES

These modern Chandeliers suspends from braided linen cords which highlights the organic tone of the design. Re-sized pendant shades in bundles of three, five and seven have been intricately pleated into precise and pristine pleating, by hand.





PLIVERRE

Design: Christian Troels



MODEL 368

Design: Flemming Agger



MODEL 181

Design: Poul Christiansen



MODEL 172

Design: Poul Christiansen



MODEL 101

Design: Kaare Klint



Model 101 comes in its original form as well as a choice of a brass or steel hang-up system.



MODEL 107

Design: Esben Klint





MODEL 351

Design: Aage Petersen



MODEL 325

Design: Vilhelm Wohlert



**SEASONAL
COLLECTION**
THE LOVE & LIGHT PROJECT



HEARTLIGHT



TWINKLESTAR

The
Love & Light
Project 

**NEW HEARTLIGHT &
TWINKLESTAR DESIGNS**

Two new designs have now joined the Love & Light Family, HeartLight, TwinkleStar, Heart, Snowflake and Angel designs were created and produced in the same principles, as our hand-pleated lamp-shades. These designs are contributors to The Love & Light project where a percentage of the sales goes towards charity. Follow our charity work on leklint.com



SEASONAL COLLECTION



SOME OF THE PROJECTS HELPED SO FAR ...



Royal Danish Ballet School, 2014



Minerva Women Centre, London 2013



Three schools, Portland, Jamaica 2017



Children Center, Fyn, Denmark, 2015



250 Candlelight lanterns were donated to terminally ill children, hospitalized in Japan



Palenque de San Basilio, Colombia 2019

Every year a percentage of the profits from the sales of the **Seasonal Collection** is donated to help someone or an organisation with limited funds that gives back to its community, regardless of destination or race. Buying a Seasonal Fold is the lifeline of **The Love & Light Project**.

Isa Dawn Whyte Jensen, Creator & Founder of **The Love & Light Project**

MODERN COLLECTION

COMET

Design: Poul Christiansen



DONUT

Design: Lise Navne



Hang-up for COMET and DONUT in Brass or Steel



GALAXY

Design: Poul Christiansen



CANDLELIGHT

Design: Philip Bro Ludvigsen



MODEL 375

Design: Shade by Esben Klint
Base by KLINT Design Team



SOLEIL

Design: Philip Bro Ludvigsen

MODERN COLLECTION

PLIVELLO

Design: Christian Troels



CYLINDER

Design: KLINT Design Team



BEE HIVE

Design: Harrit-Sørensen



MODERN COLLECTION

LAMELLA

Design: Takagi & Hornstvedt



MODERN COLLECTION

SWIRL

Design: Øivind Slatto



MODERN COLLECTION

CALEO

Design: Rikke Frost



THE BOUQUET

Design: Sinja Svarrer Damkjaer



MODERN COLLECTION

SHIBUI

Design: Søren Refsgaard



SNOWDROP

Design: Harrit-Sørensen+Samson



MODERN COLLECTION



PLIVERRE

Design: Christian Troels

MUTATIO

Design: Christian Troels



CACHÉ

Design: Aurélien Barbry



MODERN COLLECTION



CARRONADE

Design: Markus Johansson



CLASSIC COLLECTION

MODEL 101

Design: Kaare Klint



CLASSIC COLLECTION

MODEL 172 · SINUS

Design: Poul Christiansen



MODEL 105

Design: Mogens Koch



CLASSIC COLLECTION



SAX
Design: Erik Hansen

WOOD



SHADE



Lampshades model 120 are available in standard and Silk White paper.



MODEL 306
Design: Kaare Klint



MODEL 368
Design: Flemming Agger



MODEL 204
Design: Vilh. Wohlert



MODEL 311
Design: Esben Klint



MODEL 314
Design: Andreas Hansen

MASTERPIECES



MODEL 343
Design: Biilmann-Petersen



MODEL 307
Design: Esben Klint



MODEL 352
Design: Aage Petersen



MODEL 325
Design: Vilh. Wohlert

MODEL 349
Design: Aage Petersen

MODEL 351
Design: Aage Petersen

SHADES COLLECTION

LE KLINT LAMPSHADES



MODEL 1

Design: Tage Klint



MODEL 2

Design: Tage Klint



MODEL 6

Design: Tage Klint



MODEL 12

Design: Tage Klint



MODEL 16

Design: Tage Klint



MODEL 17

Design: Robert Kasal



MODEL 26

Design: Tage Klint



MODEL 30

Design: KLINT Design Team



MODEL 33

Design: Robert Kasal

Visit our website for further information on all our lighting attachments, accessories, guide to find the right size of your lampshade and more.

På det danske marked er shades kollektionen kun tilgængelig hos udvalgte partnere og LE KLINT Brand Stores / leklint.com

SEASONAL COLLECTION

THE LOVE & LIGHT PROJECT

HEARTS

Design: Isa Dawn Whyte Jensen



HEARTLIGHTS

Design: KLINT Design Team



TWINKLESTAR

Design: KLINT Design Team

SNOWFLAKES & ANGELS

Design: Tine Mouritsen



Heart, Snowflake, Angel, HeartLight and TwinkleStar designs were created and produced in the same principles, as our hand-pleated lamp-shades. These designs are contributors to The Love & Light project where a percentage of the sales goes towards charity. Follow our charity work on leklint.com

The
Love & Light
Project 

MADE FOR YOU

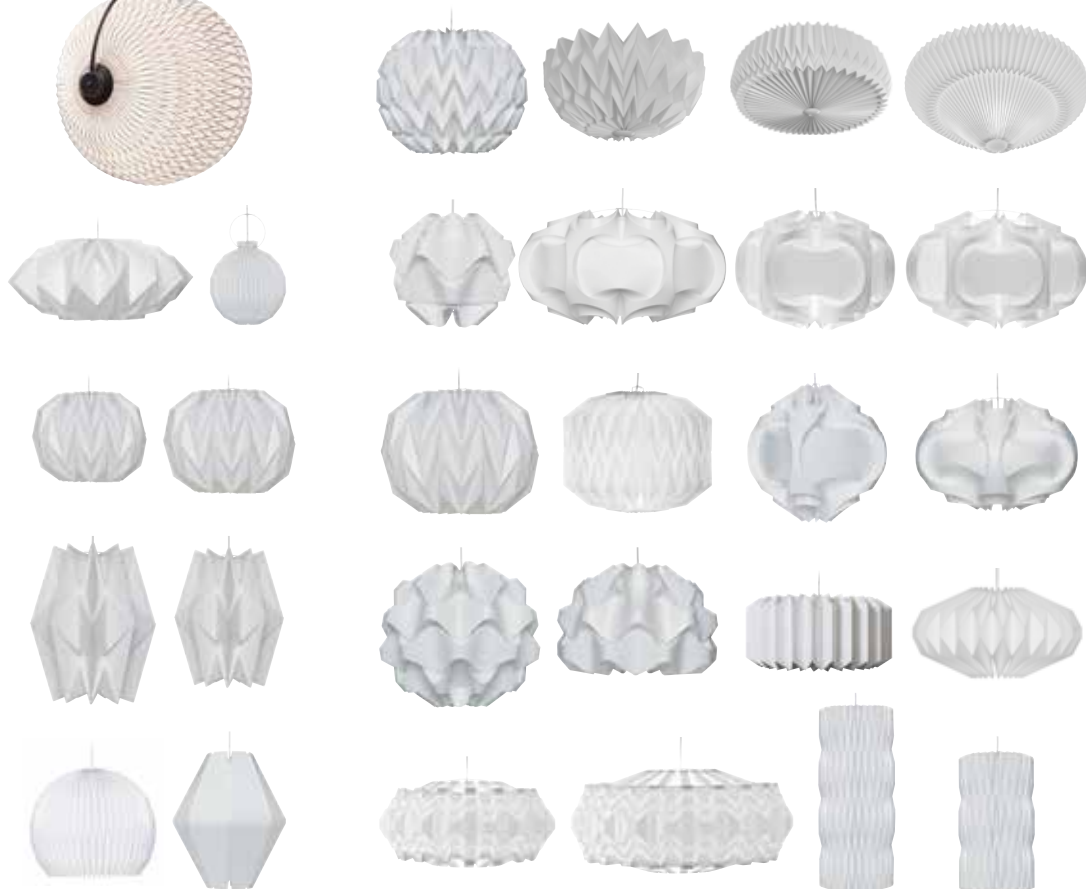
Lamps in this category are not readily available in our stock. They are produced by special order **only**.



Made for You er kun tilgængelig i
LE KLINT Brand Stores / leklint.com



MADE FOR YOU



Please enjoy the full range
of our collection in this
pocket size catalogue



LE KLINT

Egestubben 13-17 · DK-5270 Odense N
Tel. +45 66 18 19 20 · www.leklint.com

Follow us   